

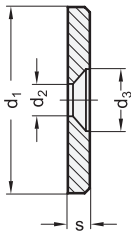
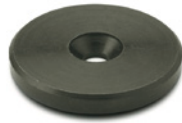
Countersunk washers

SPECIFICATION

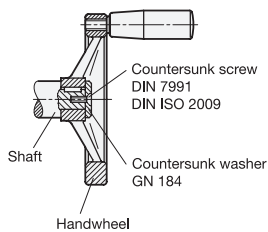
Steel
 - turned
 - blackened

INFORMATION

Countersunk washers GN 184 are retained to the face of the shaft end with a countersunk head screw DIN ISO 2009 or DIN 7991 forming a clean-look end cap.
 A typical application is the retention of handwheels with hub keyed to the shaft.



Example of application:
 Fixing
 of a handwheel
 with keyway
 on the shaft



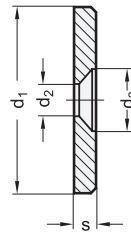
Stainless Steel- Countersunk washers

SPECIFICATION

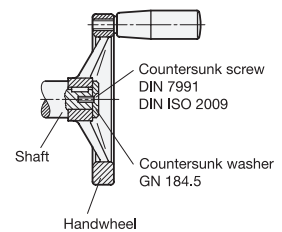
Stainless Steel AISI 303
 - turned
 - matt shot-blasted

INFORMATION

Stainless Steel-Countersunk washers GN 184.5 are retained to the face of the shaft end with a countersunk head screw DIN ISO 2009 or DIN 7991 forming a clean-look end cap.
 A typical application is the retention of handwheels with hub keyed to the shaft.



Example of application:
 Fixing
 of a handwheel
 with keyway
 on the shaft



GN 184

| Description | d1 | d2 | d3 | s | For counter-sunk screws DIN 7991 DIN ISO 2009 | ⚖ |
|-------------|----|-----|----|-----|--|----|
| GN 184-16 | 16 | 4.3 | 8 | 3 | M 4 | 4 |
| GN 184-20 | 20 | 4.3 | 8 | 3 | M 4 | 6 |
| GN 184-22 | 22 | 5.3 | 10 | 3.5 | M 5 | 9 |
| GN 184-25 | 25 | 5.3 | 10 | 3.5 | M 5 | 12 |
| GN 184-28 | 28 | 5.3 | 10 | 3.5 | M 5 | 15 |
| GN 184-32 | 32 | 6.4 | 12 | 4 | M 6 | 21 |
| GN 184-36 | 36 | 6.4 | 12 | 4 | M 6 | 29 |
| GN 184-40 | 40 | 6.4 | 12 | 5 | M 6 | 46 |
| GN 184-45 | 45 | 6.4 | 12 | 6 | M 6 | 71 |
| GN 184-52 | 52 | 6.4 | 12 | 6 | M 6 | 90 |

GN 184.5

| Description | d1 | d2 | d3 | s | For counter-sunk screws DIN 7991 DIN ISO 2009 | ⚖ |
|-------------|----|-----|----|-----|--|----|
| GN 184.5-16 | 16 | 4.3 | 8 | 3 | M 4 | 4 |
| GN 184.5-20 | 20 | 4.3 | 8 | 3 | M 4 | 6 |
| GN 184.5-22 | 22 | 5.3 | 10 | 3.5 | M 5 | 9 |
| GN 184.5-25 | 25 | 5.3 | 10 | 3.5 | M 5 | 12 |
| GN 184.5-28 | 28 | 5.3 | 10 | 3.5 | M 5 | 15 |
| GN 184.5-32 | 32 | 6.4 | 12 | 4 | M 6 | 22 |
| GN 184.5-36 | 36 | 6.4 | 12 | 4 | M 6 | 32 |
| GN 184.5-40 | 40 | 6.4 | 12 | 5 | M 6 | 46 |
| GN 184.5-45 | 45 | 6.4 | 12 | 6 | M 6 | 70 |
| GN 184.5-52 | 52 | 6.4 | 12 | 6 | M 6 | 94 |

STAINLESS STEEL

